

rosco

PREMIER™

Lighting & Production

c o m p a n y

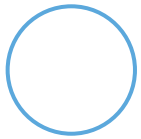
**12023 Victory Boulevard
North Hollywood, CA 91606**

(818) 762-0884 (800) 770-0884

e-mail: premier@premier-lighting.com

Gobo Catalog #9

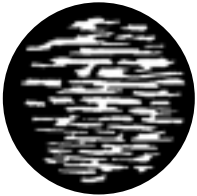




Tips

Building A Full Stage Gobo Wash

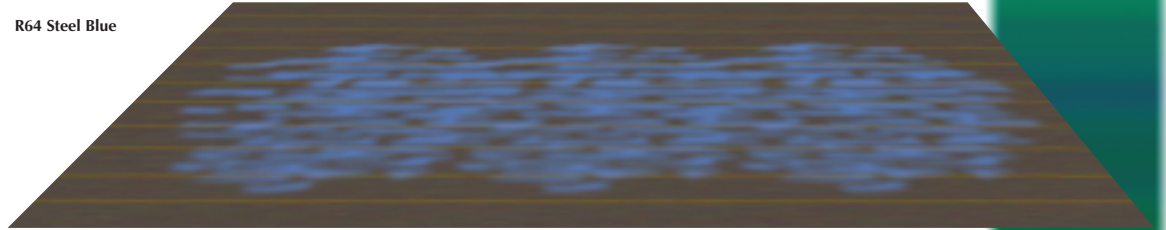
To wash the large areas of stage or scenery with foliage breakups, choose a breakup design that has interlocking or uneven edges, not an obvious circular perimeter. When you combine the projections from several fixtures, the shadows blend together with few noticeable “seams.” Ken Billington’s Interlocking Breakup design perfectly illustrates this technique.

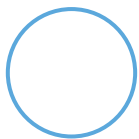


77288 Interlocking Breakup
Ken Billington



R64 Steel Blue





Tips

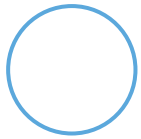
Add Depth By Combining Steel and Glass Gobos

A steel gobo creates a flat, two-dimensional image. Many projections are improved when the illusion of depth is achieved. Try adding a layer of Image Glass in with your steel gobo to enhance the look of your scene.



77771 Snow Flake
Jules Fisher

33602 Plume



Tips Build Your Own Projection

The Rosco library contains literally thousands of images from which to choose the perfect design—and still sometimes you can't find just the right image. Try sandwiching two designs together to create one new gobo design.



Layer steel gobo #79119 behind steel gobo #77703 to project a perfect haunted scene.

Gobo Sizes

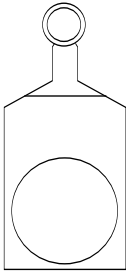
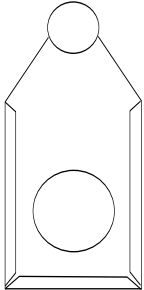

Rosco offers the entire range of steel and glass gobos in sizes to fit most modern luminaires. In addition to these standard sizes, Rosco will manufacture any gobo into non-standard sizes (barring technical constraints) and make them available at the standard price. Contact Rosco for details and lead times.

- A Size – 100mm
- B Size – 86mm
- BG Size 79mm
- M Size – 66mm
- D Size – 53.3m
- D Glass – 51.8mm
- E Size – 37.5

Gobo Holders

With the breadth and depth of gobos available, it is important to choose the gobo holder that is appropriate for your luminaire (most luminaires must use a specific size gobo) and for the type of gobo you are using (some gobos are thicker than others and require a special holder to accommodate it).

For Lekos, Rosco offers holders to accommodate most luminaires and most gobo types.

Steel Gobo Holder Sandwich Style	Glass Gobo Holder	Universal Iris Slot Holder
		
No. 13586 – Altman B size No. 13686 – ETC B Size No. 13610 – ETC A Size	No. 14579 – Altman BG Size No. 14686 – ETC B Size	No. 15786 – B Size Universal No. 15710 – A Size ETC No. 15666 – M Size ETC

	Very Thin (.005in) <i>Gobo Slot</i>	Thin <i>Gobo Slot</i>	Thicker <i>Iris Slot</i>
FIXTURE	Steel Gobos	B/W Glass, HD MC Glass, Colorizers	Image Glass, Primitives, Colorwaves, Older 2C and MC Glass
ETC S4	A or B size 13686 or 13610	B size 14686	B size 15786
Altman / Older Lekos	B Size 12586 13586	BG 14579	B 15786
Selecon Pacific	B size (Selecon)	B (Selecon)	B 15786
ETC S4 Jr	M Size (3rd Party)	M Size (3rd Party)	M Size 15666

Gobos for Moving Lights

Rosco will make every effort to produce any Rosco gobos design for any automated luminaire you specify. The limiting factors are size and information. Our technical team is in communication with all major manufacturers of moving lights and we try to maintain a complete, up-to-date database of the most current fixtures in order to have all of the technical information required to produce a successful gobo. In rare cases, you may request a gobo for a luminaire not in our database and for which we have no sizing information. Work with us to get it and we will be happy to make your gobo and meet your deadline!

Temperature, Durability, and Maintenance

Stainless Steel Gobos

Steel gobos can withstand the heat from virtually any modern luminaire, at least for a short while. In luminaires under 1200 watts, a steel gobo can be expected to last for months or longer of typical theatre usage. It is common for the gobo to discolor and possibly warp due to the intense heat but the integrity of the design will remain intact. In some designs with extremely fine line details, excessive heat may damage these fragile elements prematurely. When used in luminaires over 1200 watts, the lifespan will be reduced to some extent, depending on the heat and focus of the lamp.

Effects Glass Gobos

Colorizers are made using high temperature fused silica glass that can withstand the high temperatures from lamps up to 2500 watts. The color and patterning will not be affected by typical use in common fixtures and you can expect them to last for years unless dropped or physically damaged.

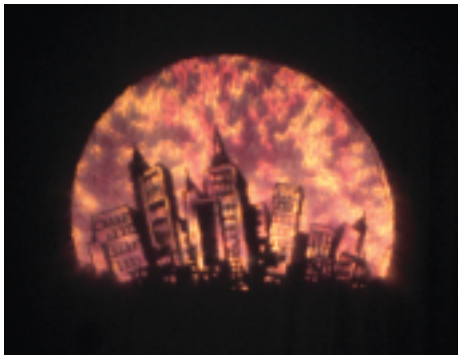
*Image Glass, Prismatic*s and *Colorwaves* are suitable for long term use in fixtures under 600 watts, or for intermittent use in fixtures up to 1200 watts or less. In these higher wattage luminaires, sustained excessive temperatures may result in cracking, delamination of the Prismatic's chips or peeling of the dichroic coating.

Glass Gobos

Black and White Glass Gobos are typically made on high temperature borosilicate glass coated with Rosco's unique Ultra-Matte™ aluminum coating. These Ultra-Matte B/W gobos are designed for use with high wattage lamps up to 1200 watts, as well as high output luminaires such as the Robert Juliat D'Artagnan. A Rosco Ultra-Matte B/W gobo can be installed with either surface facing the lamp without damaging the gobo. For certain fixtures, or upon request, Rosco B/W Glass gobos can be manufactured using Black Oxide Aluminum. This coating, applied to the same high temperature borosilicate, will reduce imaging problems found in some fixtures, such as double imaging due to internal reflections. A BLACK OXIDE GOBO MUST BE INSTALLED WITH THE BLACK SURFACE FACING AWAY FROM THE LAMP. Failure to install this gobo properly will result in immediate damage to the gobo.

Color Glass Spectrumgobos by Rosco have tremendous heat resistance due to the dichroic layers used in the manufacturing process. These gobos can withstand heat in luminaires up to 2000 watts or more and do not degrade under the heat. In extreme environments, cracking or delamination may occur. Used properly, a Rosco Glass Spectrumgobo can be expected to last for years with no apparent wear.

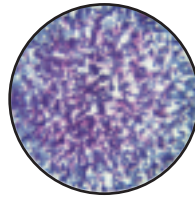
In all cases, a properly adjusted lamp focus that reduces hot spots and creates an even field of light will increase the lifespan of your gobos!



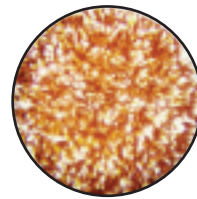
Apocalypse



Steel Gobo
#71027 Fun City



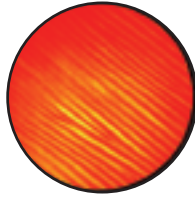
Glass Colorizer
#55004



Glass Colorizer
#55005



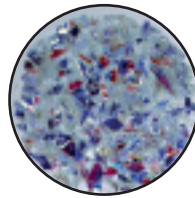
Steel Gobo
#77306 Skyline 2



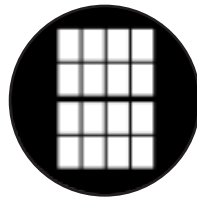
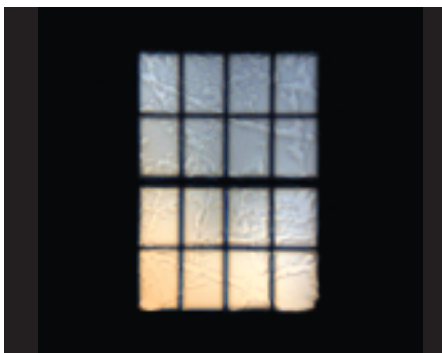
Glass ColorWave
#33201



Steel Gobo
#77308 Broadway 1



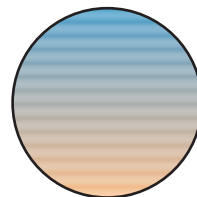
Glass Prismatic
#43802



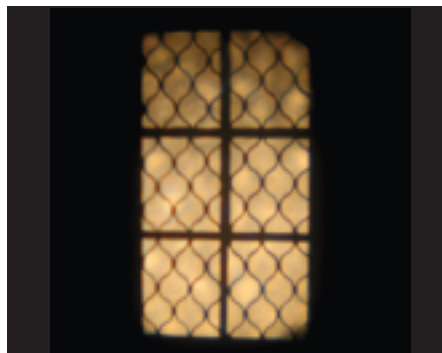
Steel Gobo
#78328 Double Hung 3x4



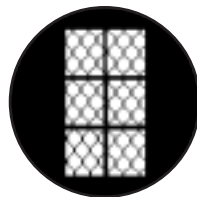
Image Glass
#33613



Split Gel
R09 + R62



Ottoman Window



Steel Gobo
#77336 Renaissance

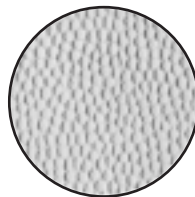
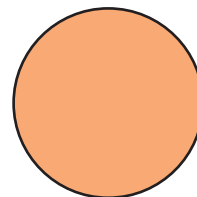


Image Glass
#33605



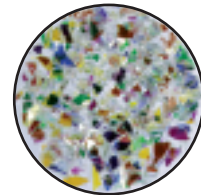
Gel
R302



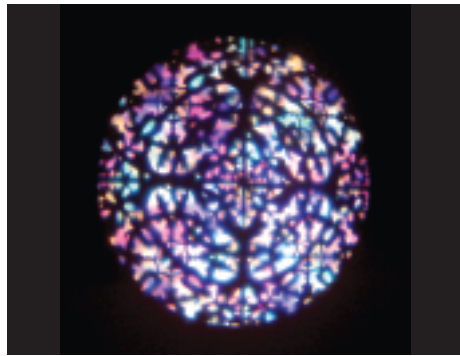
Stained Glass



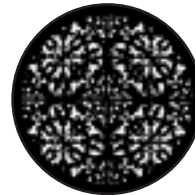
Steel Gobo
#77802 Stained Glass



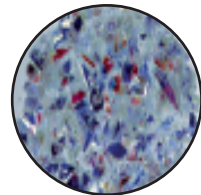
Glass Prismatic
#43801



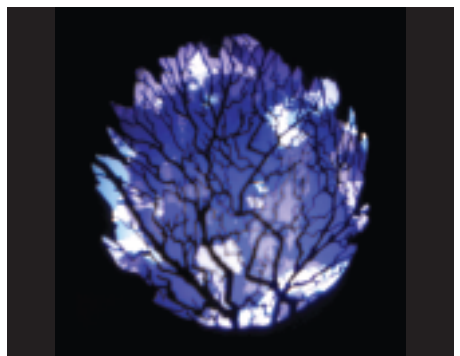
Colored Tracery



Steel Gobo
#77529 Tracery 2



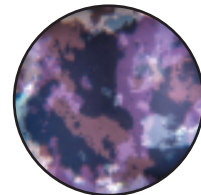
Glass Prismatic
#43802



Winter Trees



Steel Gobo
#79119 Winter Tree 2



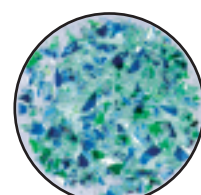
Glass Colorizer
#56103



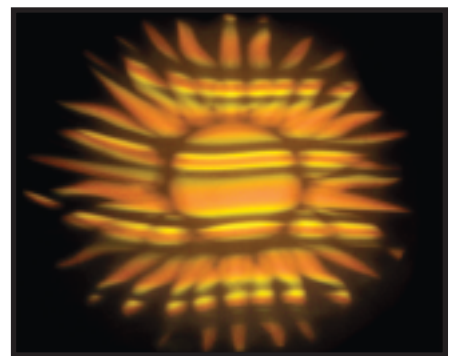
Jungle Leaves



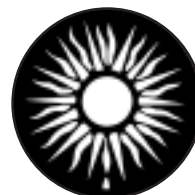
Steel Gobo
#77731 Jungle Leaves



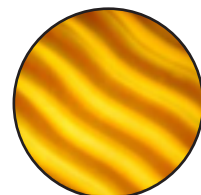
Glass Prismatic
#43805



Aztec Sun



Steel Gobo
#77400 Sun



Glass ColorWave
#33002